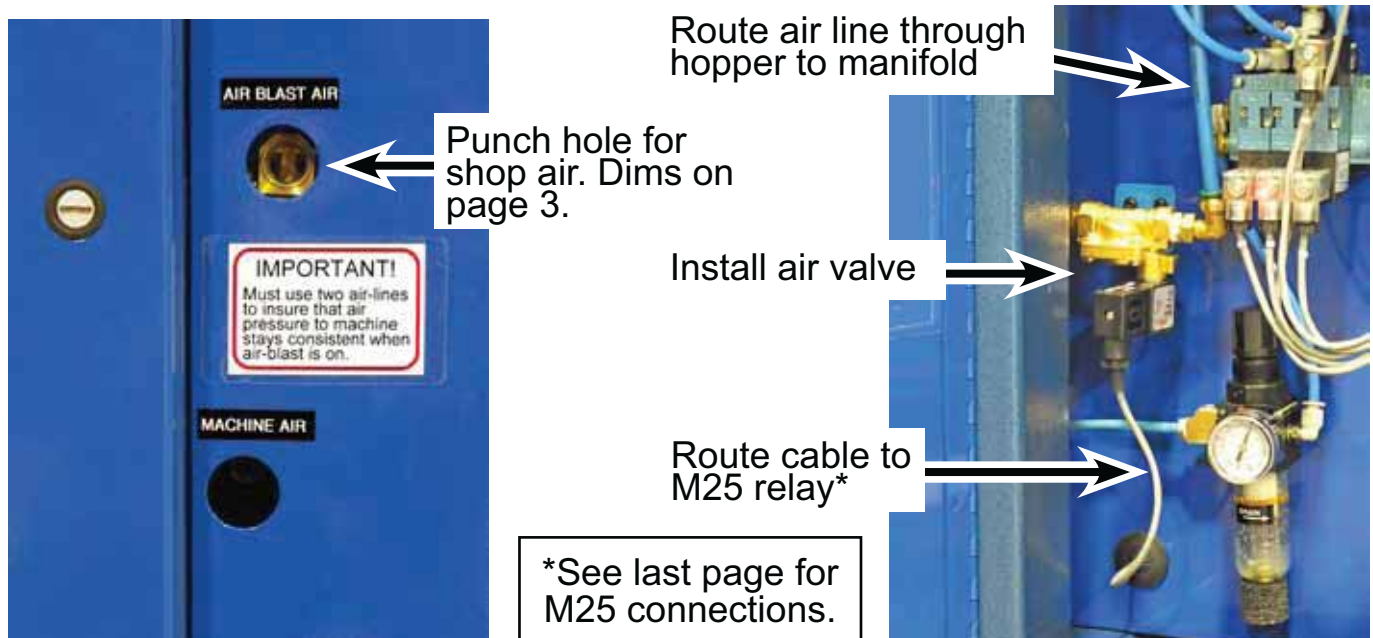
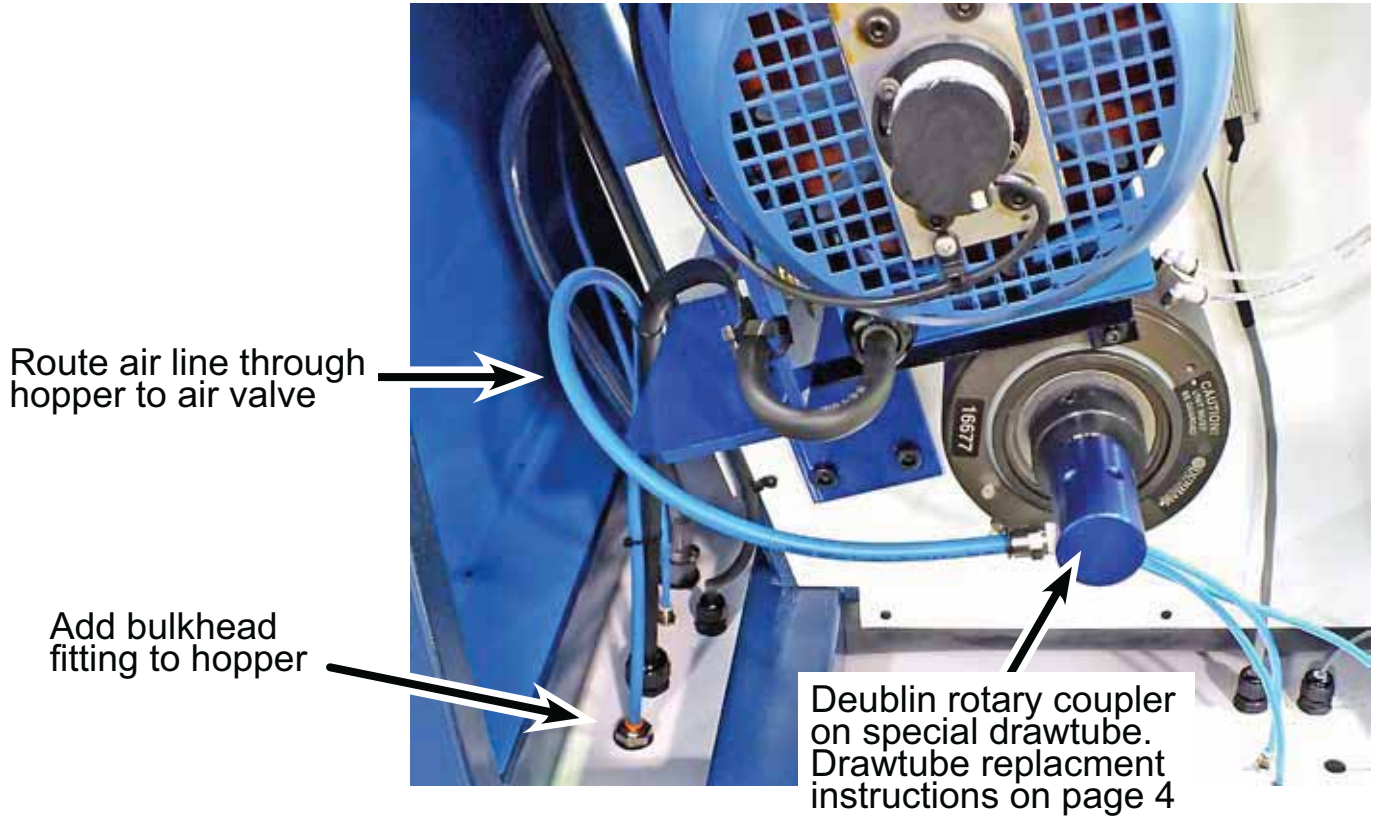
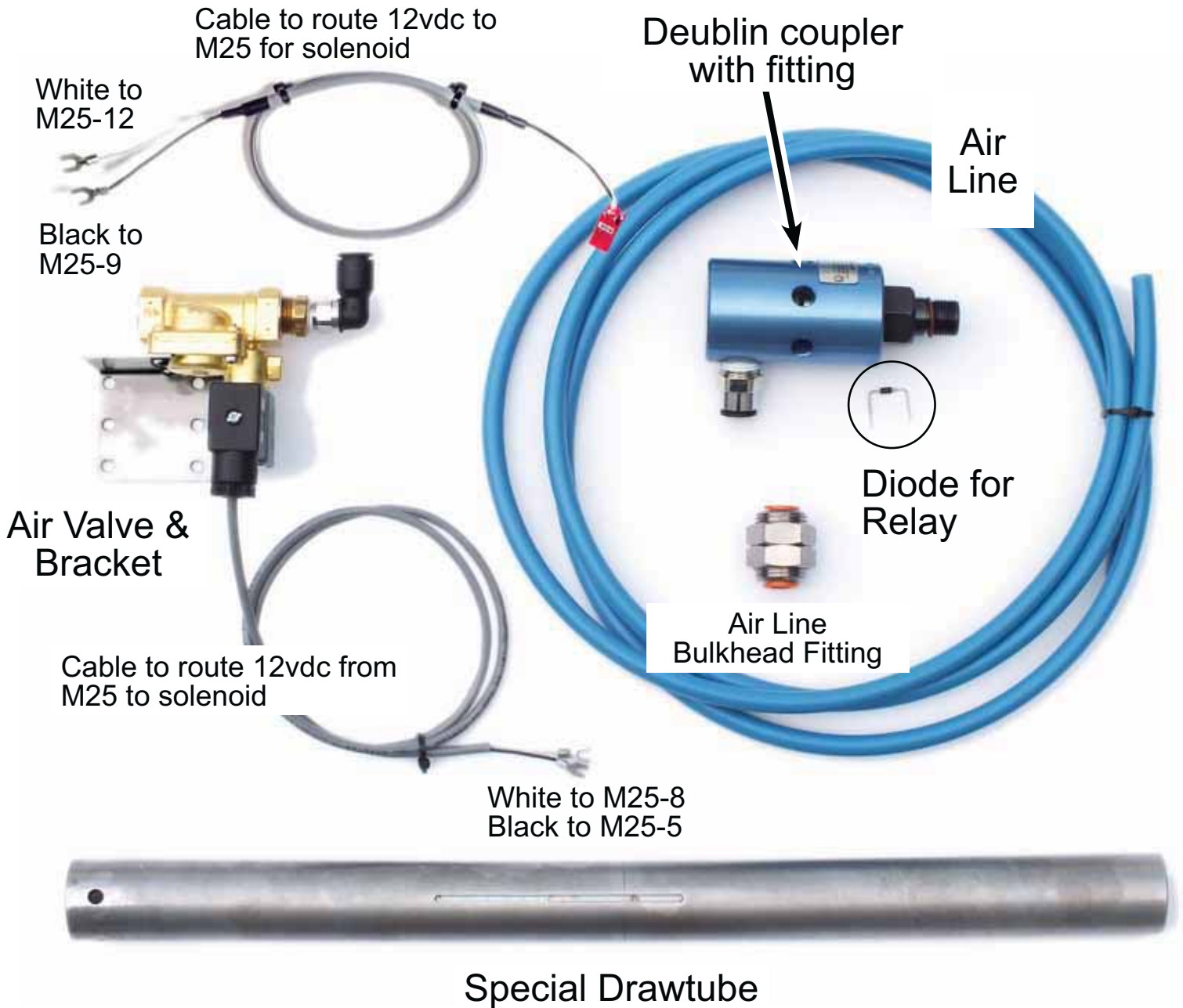


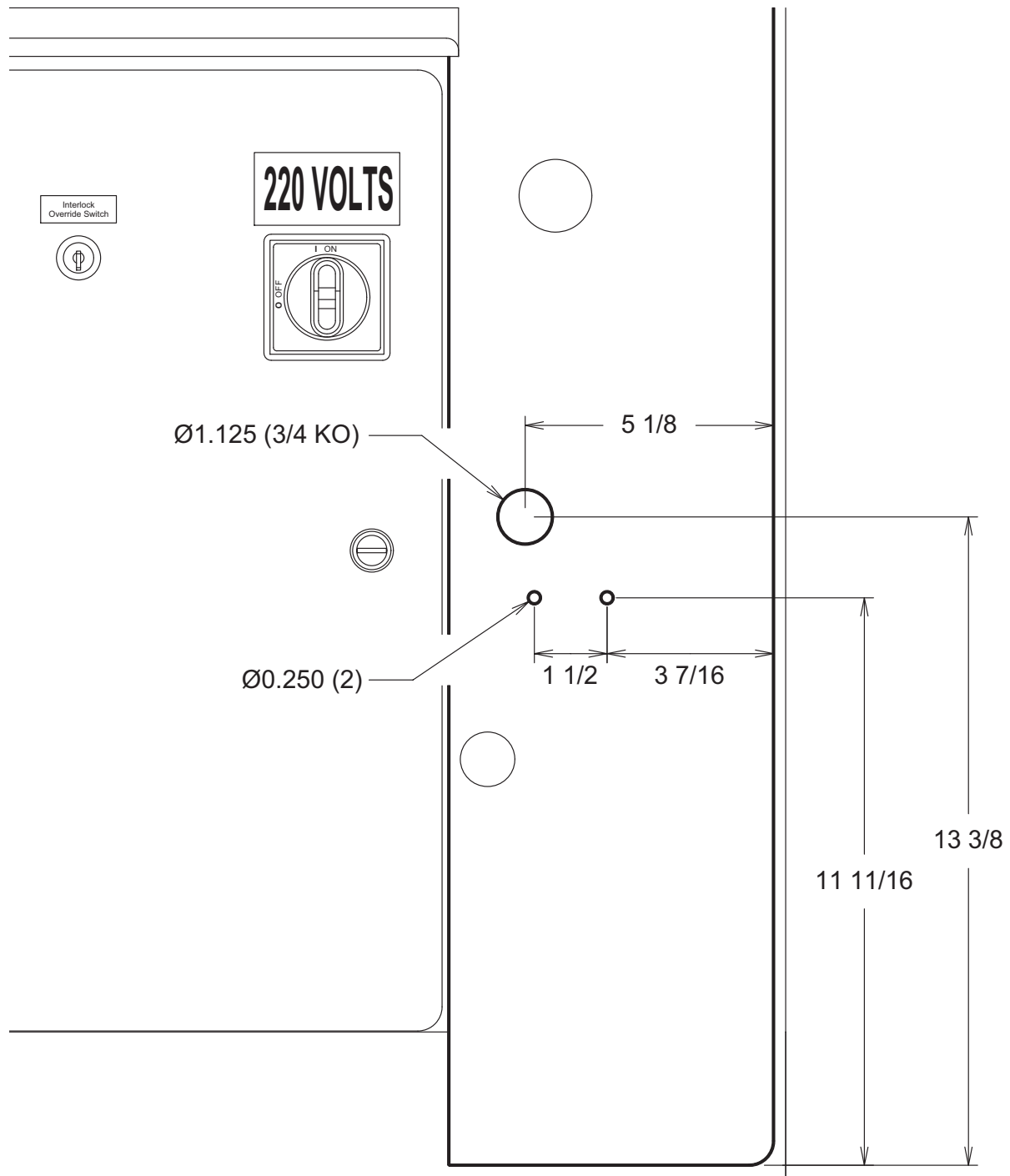
### To install Thru-spindle Air Blast Kit on GT-75



### Illustrated Parts List



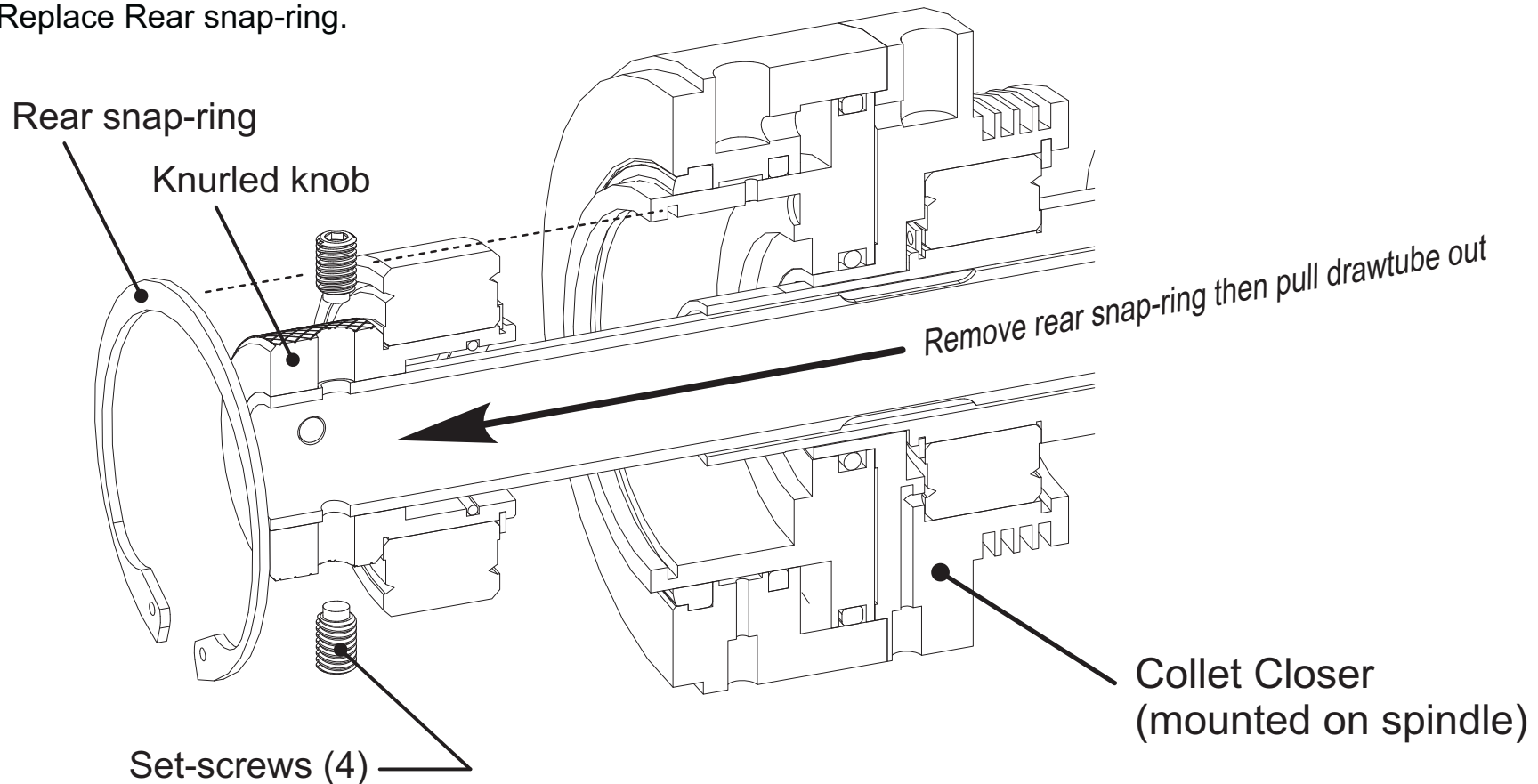
### Air Valve Mounting Hole Locations



**To replace the drawtube:**

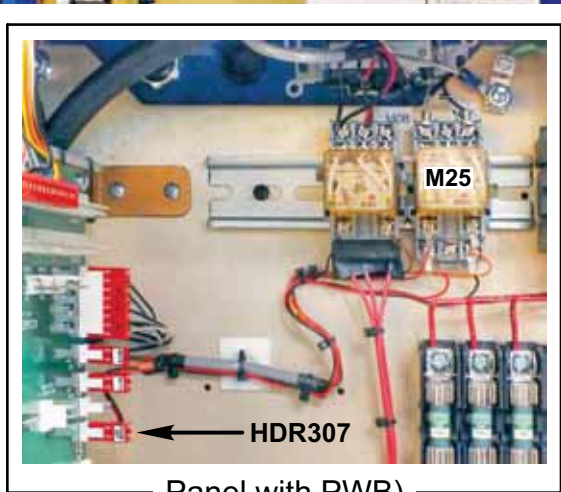
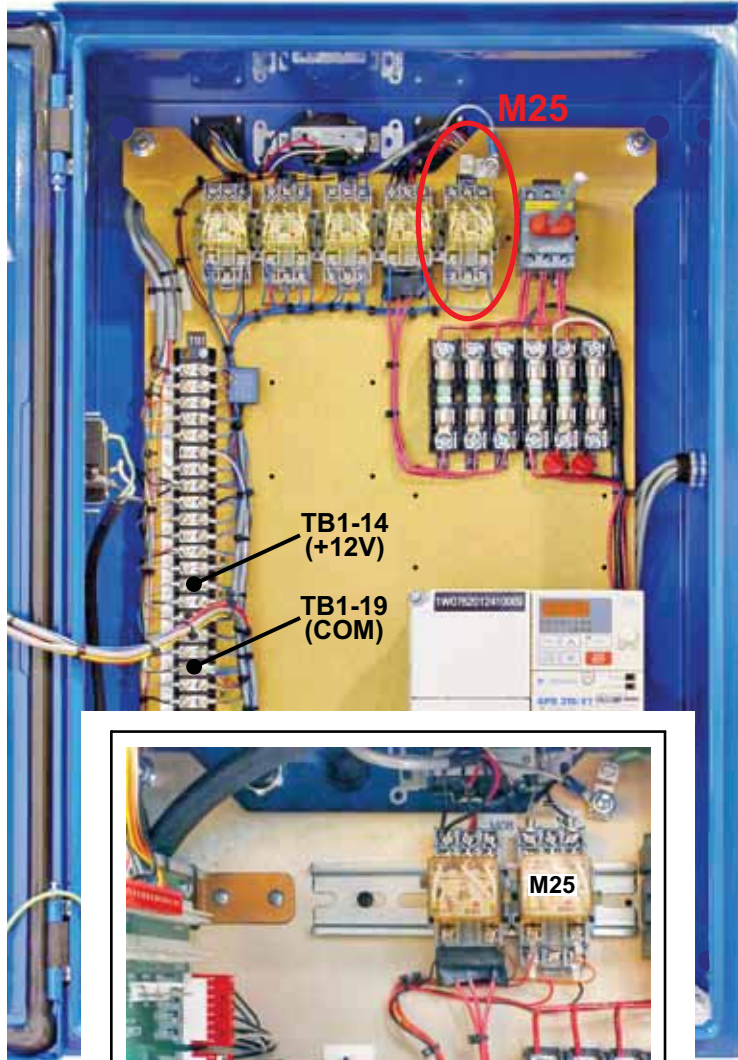
(Do not remove collet closer from spindle)

1. Remove the collet.
2. Remove the rear snap-ring.
3. Pull knurled knob, rear bearing and drawtube completely out of the collet closer.
4. Loosen (4) dog-point set-screws to clear holes in drawtube, then pull drawtube out of knurled knob assembly.
6. Replace drawtube and verify four holes are lined up with set-screw holes
7. Replace (4) dog-point set-screws. Verify that set-screw dogs go into holes in drawtube.
8. Push drawtube back into collet closer.
9. Replace Rear snap-ring.





Spindle Drive Panel with TB1  
(See inset for panel with PWB)



Panel with PWB)

**PANELS WITH TB1:**  
Route wires from TB1-14 and TB1-19 to M25-9 and M25-12 to provide 12VDC.

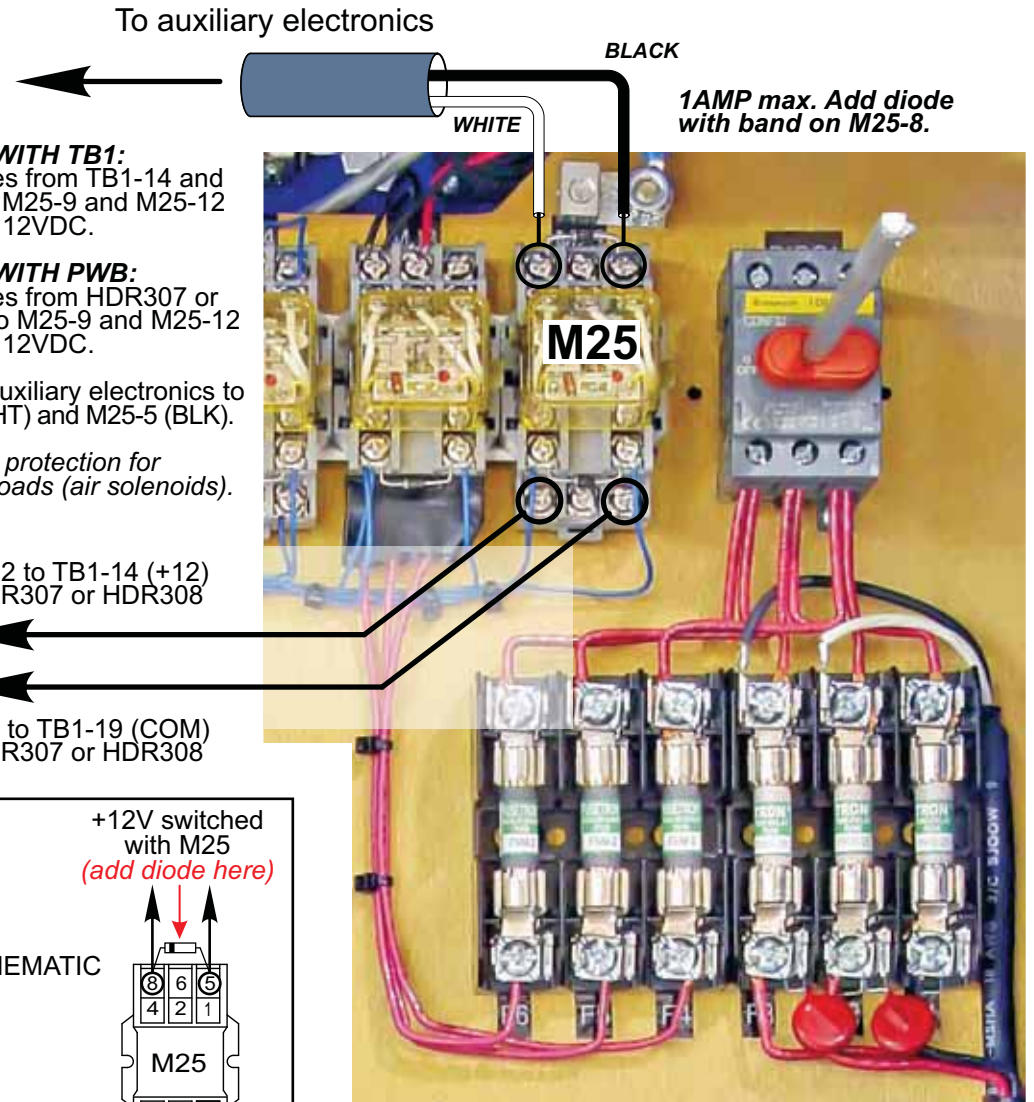
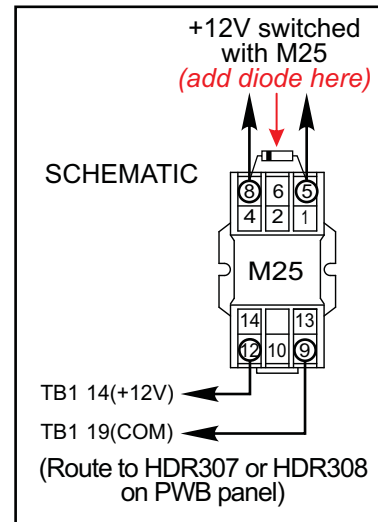
**PANELS WITH PWB:**  
Route wires from HDR307 or HDR308 to M25-9 and M25-12 to provide 12VDC.

Connect auxiliary electronics to M25-8 (WHT) and M25-5 (BLK).

Use diode protection for inductive loads (air solenoids).

M25-12 to TB1-14 (+12)  
or HDR307 or HDR308

M25-9 to TB1-19 (COM)  
or HDR307 or HDR308



**NOTE:** If you find any wires on M25 relay except at 13 & 14, **DO NOT** continue installation!  
Call (541) 332-7004 for assistance.