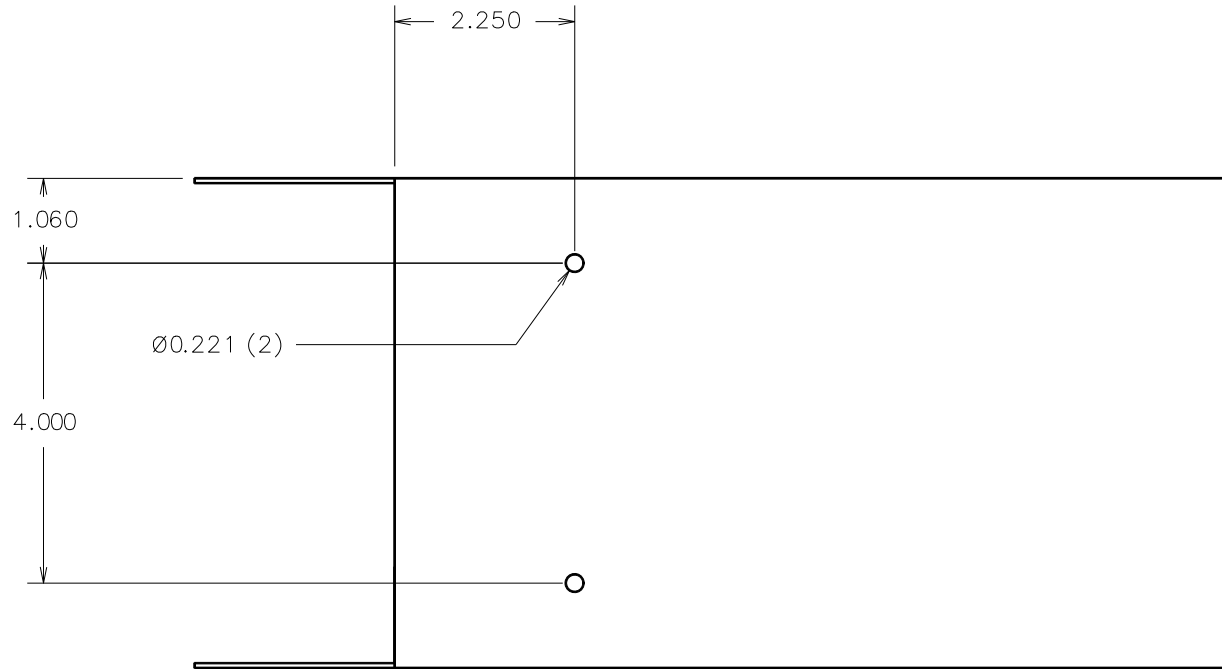


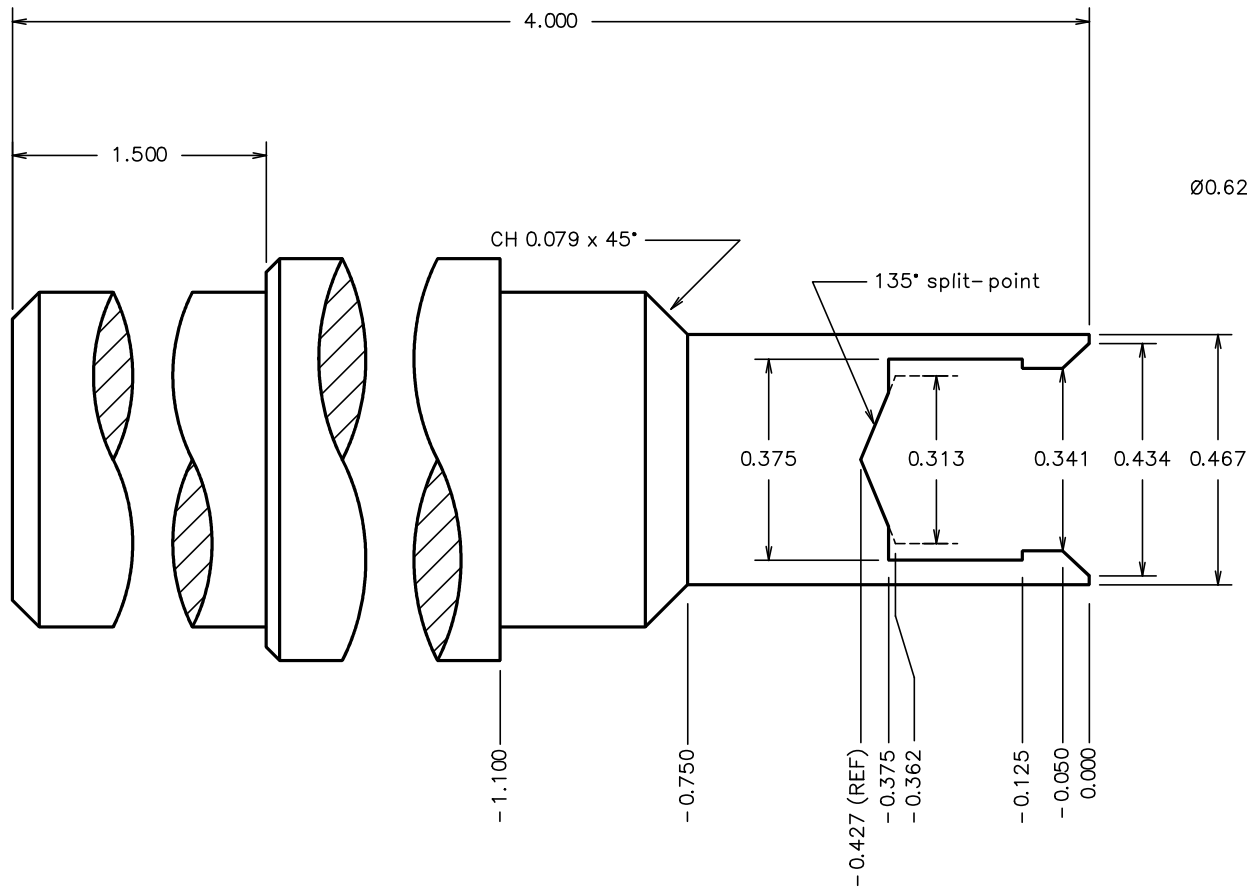
REVISIONS



MOUNTING HOLES FOR PARTS- BASKET TRAY

MAT'L: SM02- EXT SIDE COVER

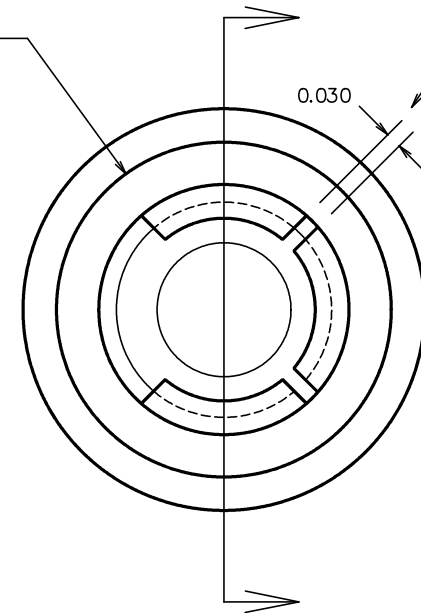
TOLERANCES .00 = ± .025 .000 = ± .012 ANGLE = ± 1°		<b>OmniTurn</b> CNC TURNING SYSTEMS	REV —
UNLESS OTHERWISE NOTED	PROJECTION	MACHINE	
DRAWN BY: SCD	PART NAME	GT- 75 & GT- Jr	
REVISED:	SHEET NO.	PARTS- BASKET TRAY MOD	
DATE: 14mar1	TOTAL SHEETS	PART AND CAD NO. SM02- EXT_MOD2	
		SM02-EXT_mod2.dcd	



SLOT .030 x 0.375 DP (4) PLCS @ 90°  
REMOVE (1) QUADRANT @ 0.375

Ø0.625

0.030



RIGID CUP FOR HOLDING PART ON OD  
AND LOCATING PART ON FACE

MAT'L: 3/4 "DELRIN" BAR

TOLERANCES .00 = ± .01 .000 = ± .005	PROJECTION FIRST ANGLE	<b>OmniTurn</b> CNC TURNING SYSTEMS	REV —
UNLESS OTHERWISE NOTED.	MACHINE	SIMPLE TRACK-LOADER	
DRAWN BY: SCD	PART NAME	CUP, OD, 0.350	
REVISED:	SHEET NO. 1	PART AND CAD NO. 792-02-101	
DATE: 14jan14	TOTAL SHEETS 1	79202101_cup_350od.dcd	