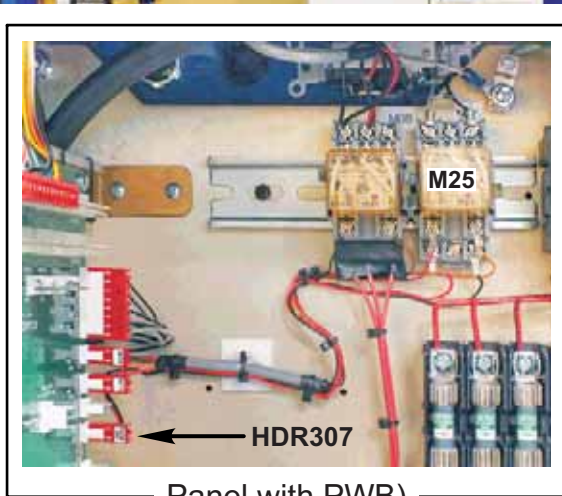
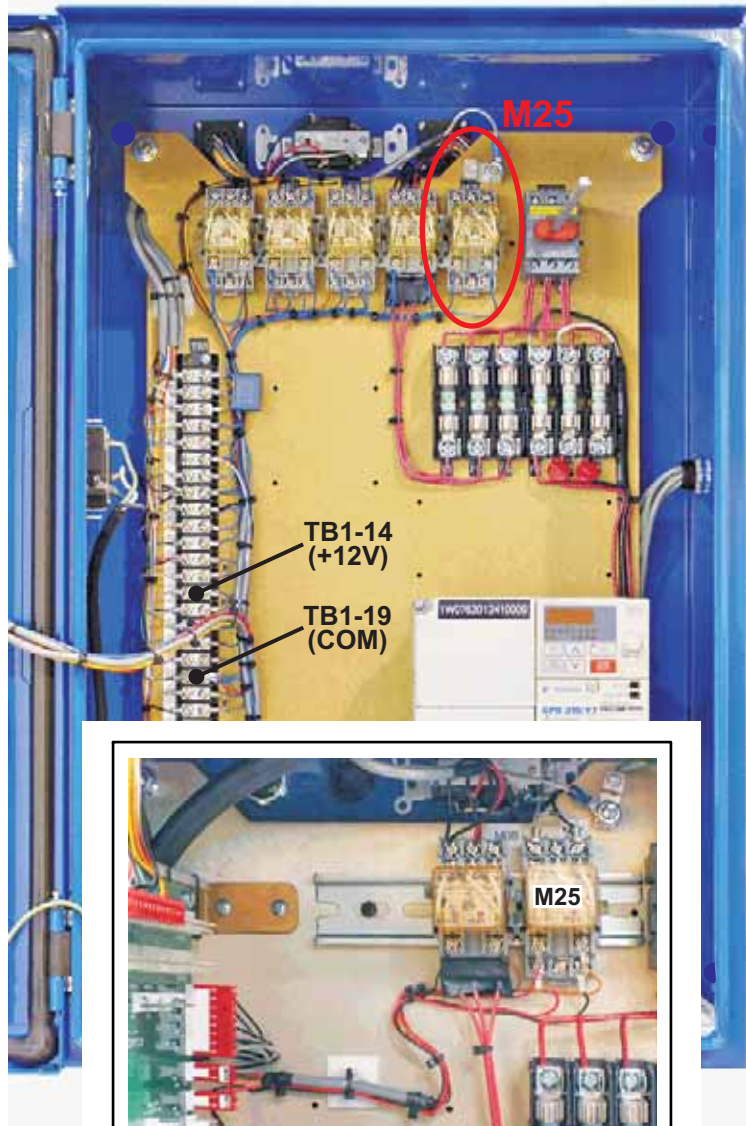


Spindle Drive Panel with TB1
(See inset for panel with PWB)



Panel with PWB)

PANELS WITH TB1:
Route wires from TB1-14 and TB1-19 to M25-9 and M25-12 to provide 12VDC.

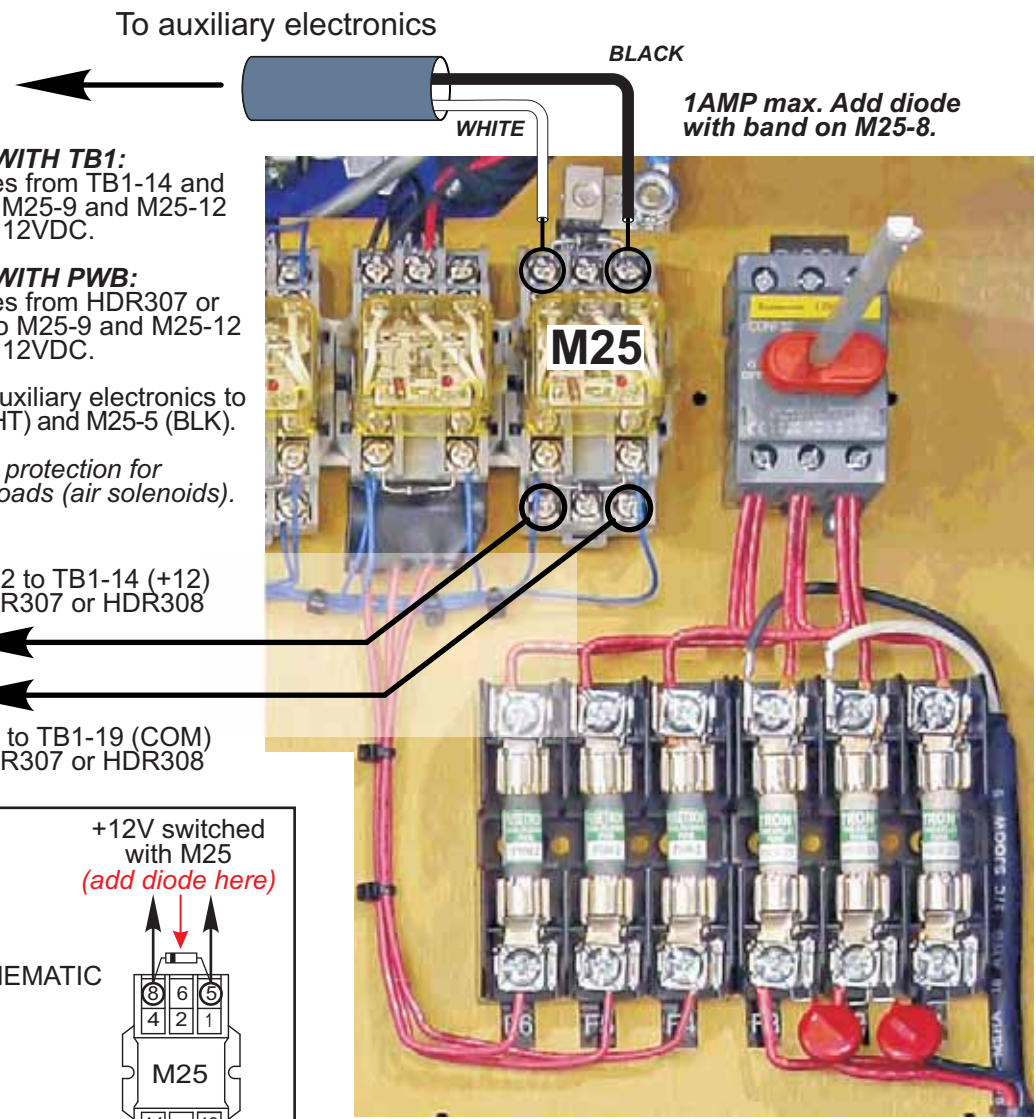
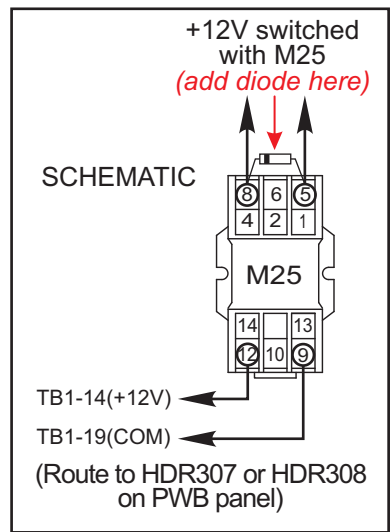
PANELS WITH PWB:
Route wires from HDR307 or HDR308 to M25-9 and M25-12 to provide 12VDC.

Connect auxiliary electronics to M25-8 (WHT) and M25-5 (BLK).

Use diode protection for inductive loads (air solenoids).

M25-12 to TB1-14 (+12)
or HDR307 or HDR308

M25-9 to TB1-19 (COM)
or HDR307 or HDR308



NOTE: If you find any wires on M25 relay except at 13 & 14, **DO NOT** continue installation!
Call (541) 332-7004 for assistance.