

Replace **BACO** Jog switch with IDEC

To replace BACO switch assembly with IDEC switch assembly:

1. Remove BACO contact block assembly from panel-mounted operator
2. Replace BACO operator with IDEC operator
3. Install IDEC contact block assembly

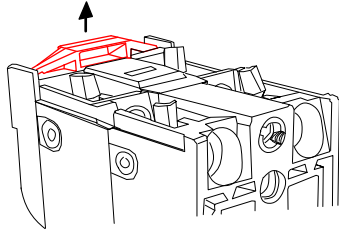
4. Move wires from BACO contact block assembly to IDEC:

Move the orange wires from right side of Baco to top of IDEC

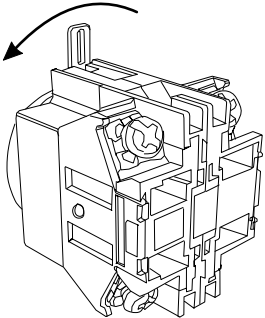
Move the four wires from left side of Baco to top of IDEC

Note that the BLK/WHT at rear of Baco moves to front of IDEC and the

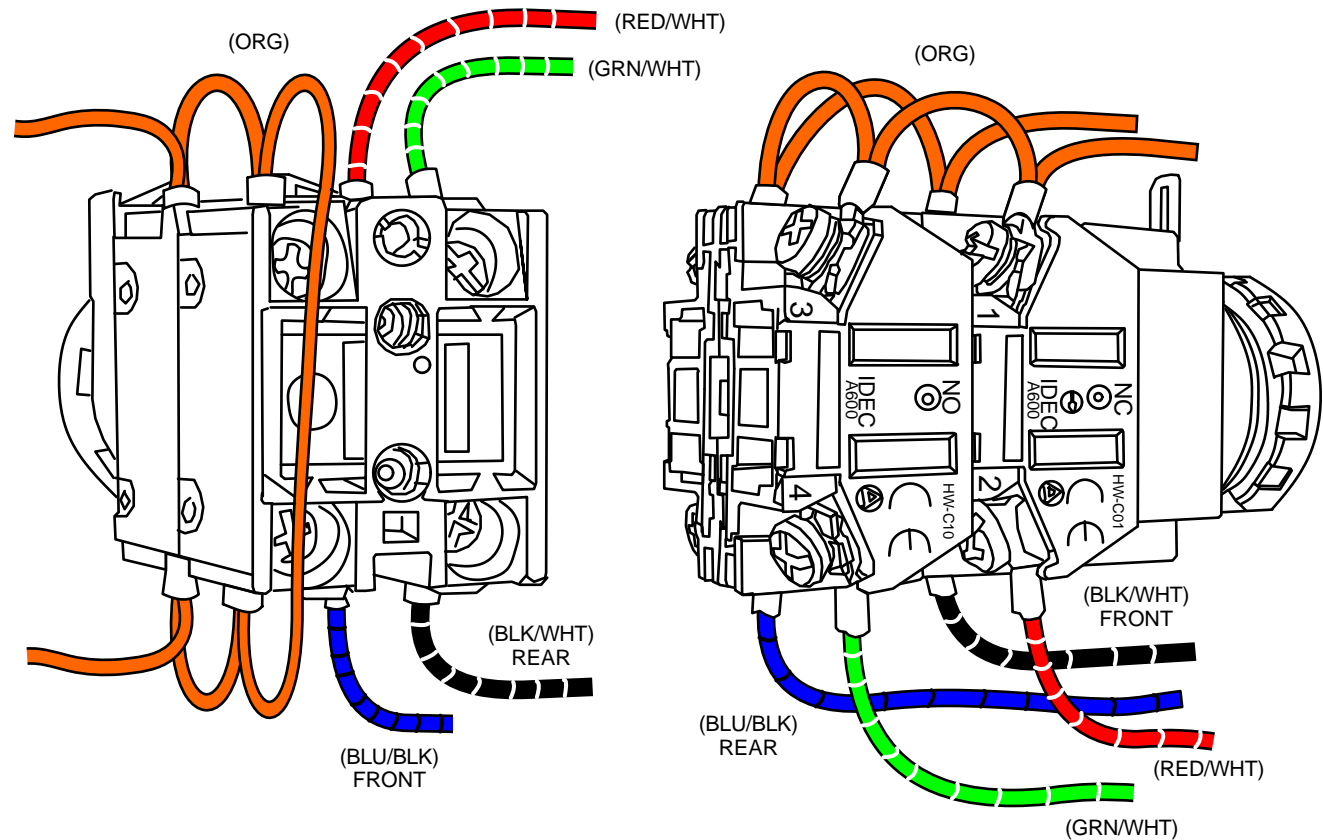
BLU/BLK at front of Baco moves to rear of IDEC



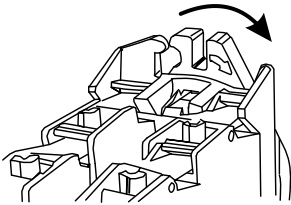
BACO Jog Stick: pry tab up to remove contact block assembly from panel-mounted operator.



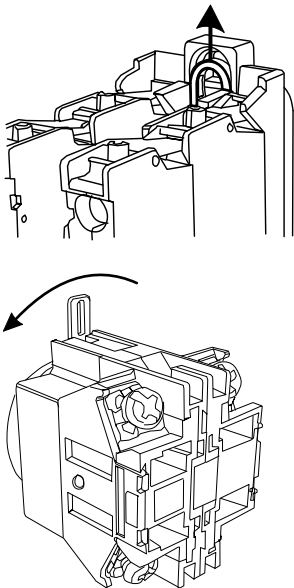
Typical IDEC: rotate tab to left to remove contact block assembly from panel-mounted operator.



Replace Allen Bradley Jog switch with IDEC



Allen Bradley latch may be tab as above: rotate to right to remove. If latch is as below, use needle-nose pliers to lift arch as shown.



Typical IDEC: rotate tab to left to remove contact block assembly from panel-mounted operator.

- To replace BACO switch assembly with IDEC switch assembly:
1. Remove BACO contact block assembly from panel-mounted operator
 2. Replace BACO operator with IDEC operator
 3. Install IDEC contact block assembly
 4. Move wires from BACO contact block assembly to IDEC

