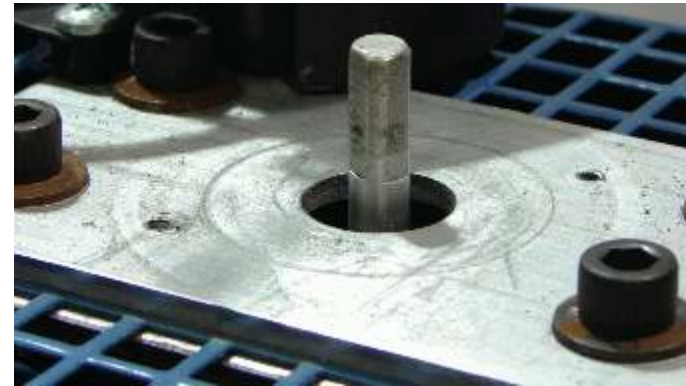


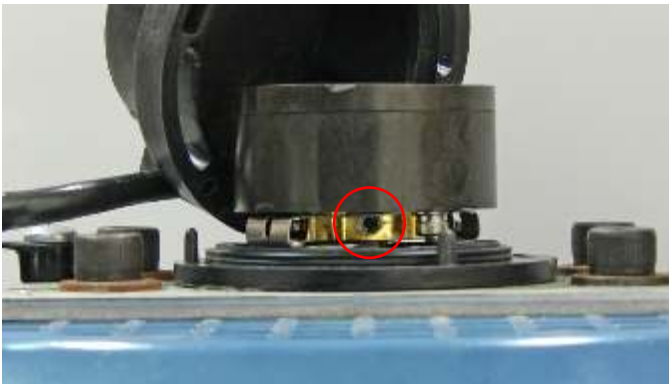
## Installing Direct Mount Encoder



The encoder is mounted on a plate which has been centered on the sub-shaft at the factory. *Do not loosen the four 1/4-20 socket-head screws which fasten this plate to the fan housing. Do not loosen any of the screws that hold the fan*



The encoder shaft has two flats milled at right angles. There are two corresponding set-screws on the encoder. Carefully slide the encoder onto the shaft, being certain that the set-screws line up with the two flats in the shaft.



Use a 0.050" hex wrench to tighten the two set- screws. Hold the encoder assembly flush against the mounting plate while tightening the set-screws.



Fold the encoder cover over the encoder and fasten with two 6-32 socket-head screws (supplied). Fix the cable-tie strain relief to the shaft using supplied hardware.